

**Kiwikit ROXAN**

**RFM**

**THE MIDLANDS MART**

[RUGBYFARMERSMART.COM](http://RUGBYFARMERSMART.COM)

# **APRIL FAIR**

## **SHOW & SALE OF STORE CATTLE**

### **PLUS MORNING SALE OF EWES WITH LAMBS AT FOOT**



**LOTS 209-211 FROM JW & BE & PW SEMPLE, KENILWORTH**

**THURSDAY 15TH APRIL 2021**

**TO INCLUDE PART DISPERSAL FROM JW & BE & PW SEMPLE MANY OF WHICH CARRY THE POLLED GENE**

**STORE CATTLE 11:30AM**

**EWES WITH LAMBS AT FOOT 10:30AM**

**Approx 400 Head of Cattle & 300 Couples**

The Charolais Pavilion, Avenue M, Stoneleigh Park,  
Kenilworth, Warwickshire CV8 2RG

02476 697731 | [www.rugbyfarmersmart.com](http://www.rugbyfarmersmart.com) | 43/139/8013

# CATALOGUE

Thursday 15th April 2021

Catalogue presented WITHOUT PREJUDICE For guidance only.

FA - DENOTES PRODUCERS HAVE DECLARED THEIR STOCK AS FARM ASSURED

**CATTLE MUST BE PENNED BY 9:30AM**

## **SHOW 10AM**

**Prizes for The Best Steer & The Best Heifer  
Competing For The Frank Riley Perpetual Rose Bowl**

## **JW & BE & PW SEMPLE, KENILWORTH**

**Part Production Sale of Cows that fall outside the Herds Breeding Plan.**

*Farm Assured, Homebred, Single Suckled, High Health Scheme, Johnes Monitored, BVD*

*Free & All BVD Vaccinated. TB tested 9th April 2021*

<u>PEN</u>	<u>LOT</u>		<u>IN CALF COW WITH CALF AT FOOT</u>
1	201	1	UK 202988 100662 25.7.2018 Polled Limousin x Cow in calf due December 2021 with <b>Polled</b> Limousin x Heifer calf at foot UK 202988 200894 05.10.2020
			<u>IN CALF COWS</u>
2	202	1	UK 202988 700199 25.1.2011 Limousin X Cow. In calf with twins due mid September 2021
	203	1	UK 202988 200208 08.04.2011 Limousin x Cow in calf with twins due mid September 2021
3	204	1	UK 202988 500239 03.04.2012 Limousin x Cow in calf with single due mid September 2021
	205	1	UK202988 300251 07.05.2012 Limousin x Cow in calf with single due mid September 2021
			<u>IN CALF HEIFERS</u>
4	206	1	UK 202988 100760 06.07.2019 <b>Polled</b> Limousin x Heifer in calf with single due mid October 2021
	207	1	UK 202988 600765 01.08.2019 <b>Polled</b> Limousin x Heifer in calf with single due mid September 2021
	208	1	UK202988 700766 01.08.2019 <b>Polled</b> Limousin x Heifer in calf with twins due mid September 2021

<u>PEN</u>	<u>LOT</u>		<b><u>BULLING HEIFERS</u></b>
5	209	1	UK 202988 200789 09.10.2019 <b>Polled</b> Limousin x Bulling Heifer
	210	1	UK 202988 700794 16.10.2019 <b>Polled</b> Limousin x Bulling Heifer
	211	1	UK 202988 500799 20.01.2020 <b>Polled</b> Limousin x Bulling Heifer

## — **BREEDING BULLS**

<u>PEN</u>	<u>LOT</u>		<b><u>JW &amp; BE &amp; PW SEMPLE, KENILWORTH</u></b>	<b><u>FA</u></b>
6	212	1	UK 202988 500820 Unregistered <b>Limousin bull. Heterozygous</b> polled. By Greensons Orson (Tigris) out of Greensons Howlett Cow. D.O.B 16.03.2020 Homebred and single suckled. Could be registered for Pedigree breeding.	
			<b><u>JB HM &amp; J GILBERT, ARLEY</u></b>	<b><u>FA</u></b>
			TB:TBC	
7	213	1	Limousin x Bull	20 months

## — **FEEDING BULLS**

<u>PEN</u>	<u>LOT</u>		<b><u>JW &amp; BE &amp; PW SEMPLE, KENILWORTH</u></b>	<b><u>FA</u></b>
			TB:30.3.21	
8	214	1	Limousin x Bull <i>Homebred, Single Suckled, High Health Scheme, Johnes Monitored &amp; BVD Free</i>	8 months
			<b><u>C &amp; S TAYLOR, WARWICK</u></b>	
			TB:22.3.21	
9	215	1	Hereford Rig <i>Homebred &amp; Registered Sire</i>	13 months
			<b><u>HEART OF ENGLAND FARMS, CLAVERDON</u></b>	<b><u>FA</u></b>
			TB:TBC	
9A	216	1	Limousin Bull <i>Homebred &amp; Single Suckled</i>	15 months

## — I STORE CATTLE

<u>PEN</u>	<u>LOT</u>		<u>RA STEPHENS, WOLSTON</u>	<u>FA</u>
			TB:16.3.21	
10	217-219	1	Limousin x Steer	6 months
		2	Limousin x Heifers	8-11 months
			<i>Homebred &amp; Single Suckled</i>	
			<u>M W WARNER, WATERGALL</u>	
			TB:29.3.21	
11-12	220-230	12	Piedmontese x Steers & Heifers	7-9 months
			<i>Homebred, Single Suckled &amp; Clear of BVD</i>	
			<u>P HONOUR &amp; SON, BRILL</u>	<u>FA</u>
			TB:TBC	
13-14	231-240	17	Beef Shorthorn Steers & Heifers	9-12 months
			<i>Registered Sires</i>	
			<u>JW &amp; BE &amp; PW SEMPLE, KENILWORTH</u>	<u>FA</u>
			TB:25.2.21	
15	241-246	2	Limousin x Steers	8-11 months
		8	Limousin x Heifers	8-14 months
			<i>Homebred, Single Suckled, High Health Scheme, Johnes Monitored, BVD Free &amp; all BVD Vaccinated</i>	
			<u>PJ INCLEY, WATFORD VILLAGE</u>	<u>FA</u>
			TB:22.2.21	
16	247-252	5	Simmental x Steers	11-12 months
		1	Limousin x Steer	9 months
		1	Limousin x Heifer	8 months
			<i>Homebred &amp; BVD Free Accredited</i>	
			<u>DAVIES &amp; DOODY, REARSBY</u>	
			TB:TBC	
17	253-258	7	Limousin x Heifers out of Blue Cows	7-12 months
		2	Limousin x Steers out of Blue Cows	7-12 months
			<i>Homebred, Single Suckled, Many Show Potential, Fit to Breed. Videos on our social media</i>	

<u>PEN</u>	<u>LOT</u>		<b><u>F BADGER, HASELEY</u></b>	<b><u>FA</u></b>
			TB:TBC	
18	259-264	5	Beef Shorthorn Steers	10 months
		5	Beef Shorthorn Heifers	8-10 months
			<i>Homebred, Single Suckled &amp; Registered Sires</i>	
			<b><u>R &amp; NJ BRYSON, STRETTON ON DUNSMORE</u></b>	
			TB:9.4.21	
19-20	265-276	5	Limousin x Steers	10-12 months
		10	Aberdeen Angus Steers	10-11 months
			<i>Homebred &amp; Single Suckled</i>	
			<b><u>D J F &amp; R J F LAMB, FILLONGLEY</u></b>	
			TB:TBC	
21	277-282	8	Blonde x Steers	8-12 months
			<i>Genuine Outliers from Charolais Cows</i>	
			<i>Homebred &amp; Single Suckled</i>	
			<b><u>JB HM &amp; J GILBERT, ARLEY</u></b>	<b><u>FA</u></b>
			TB:TBC	
22	283-284	1	Limousin x Steer	10 months
		1	Limousin x Steer	13 months
			<b><u>J A &amp; S WRENCH, GREAT WOLFORD</u></b>	<b><u>FA</u></b>
			TB:16.3.21	
23-25	285-300	30	Limousin x Steers & Heifers	9-12 months
			<i>Homebred, Single Suckled &amp; BVD Free</i>	
			<b><u>WOODS FARM MERIDEN</u></b>	<b><u>FA</u></b>
			TB:5.4.21	
26	301-304	6	Simmental x Heifer	11-12 months
			<i>Single Suckled &amp; Treated for Pneumonia</i>	
			<b><u>WR EALES &amp; SON, PEATLING MAGNA</u></b>	<b><u>FA</u></b>
			TB:6.4.21	
27	305-310	3	Pure Simmental Steers	10-13 months
		3	Pure Simmental Heifers (Free Martin)	10-13 months
			<i>Homebred, High Health Status</i>	
			<b><u>RS BEATY &amp; SONS, MERIDEN</u></b>	<b><u>FA</u></b>
			TB:TBC	
28	311-315	8	Simmental x Steers	12 months
			<i>Homebred &amp; Single Suckled</i>	

<u>PEN</u>	<u>LOT</u>	<b><u>P WRIGHT, RYTON ON DUNSMORE</u></b>		
			TB:1.4.21	
29	316-318	2	Aberdeen Angus Steers	12 months
		2	Continental Heifers	12 months
		<b><u>OJ &amp; MJ GUEST, ORTON ON THE HILL</u></b>		
			TB:TBC	<b><u>FA</u></b>
30	319-323	1	Aberdeen Angus Steer	11 months
		1	Charolais x Heifer	11 months
		2	British Blue Steer & Heifer	11 & 12 months
		1	Charolais Steer	13 months
			<i>Homebred &amp; Single Suckled</i>	
		<b><u>R W CROSS &amp; PARTNERS, ASTON FLAMVILLE</u></b>		
			TB:TBC	<b><u>FA</u></b>
31	324-327	7	Limousin x Steers	14-15 months
			<i>Homebred &amp; Single Suckled</i>	
		<b><u>HN &amp; SE STAINES, COUNTSTHORPE</u></b>		
			TB:29.3.21	
32	328-329	1	Hereford x Steer	13 months
		1	Hereford x Heifer	13 months
			<i>Homebred &amp; Single Suckled</i>	
		<b><u>SJ &amp; B STEVENSON, NEWBOLD VERNON</u></b>		
			TB:22.3.21	
33	330-332	5	Aberdeen Angus x Steers & Heifers	12-16 months
			<i>Some have Registered Sires</i>	
		<b><u>D &amp; GM WRIGHT, WITHYBROOK</u></b>		
			TB:29.3.21	<b><u>FA</u></b>
34	333-338	7	Simmental x Steers & Heifers	16 months
		2	Simmental x Steer & Heifer	13 months
		1	Limousin x Steer	13 months
			<i>Homebred &amp; Single Suckled</i>	
		<b><u>R J WRIGHT, HUNNINGHAM</u></b>		
			TB:TBC	<b><u>FA</u></b>
35-36	339-349	18	Aberdeen Angus & Limousin Heifers	12-15 months
			<i>Registered Sires</i>	

<u>PEN</u>	<u>LOT</u>		<b><u>HEART OF ENGLAND FARMS, CLAVERDON</u></b>	<b><u>FA</u></b>
			TB:TBC	
37-38	350-357	11	Limousin x Steers	12-16 months
		4	Limousin x Heifers	12-16 months
			<i>Homebred &amp; Single Suckled</i>	
			<b><u>S POWELL, RADFORD SEMELE</u></b>	
			TB:TBC	
39	358-361	4	British Friesian Steers	13-14 months
		2	Hereford Steers	13-14 months
			<i>Herefords have Registered Sires</i>	
			<b><u>J S ARTHERS, BEDWORTH</u></b>	<b><u>FA</u></b>
			TB:16.3.21	
40	362-365	4	Limousin x Steers	14-16 months
		1	Limousin x Heifer	15 months
			<i>Homebred &amp; Single Suckled</i>	
			<b><u>ROBINSON BROS, DRAYTON</u></b>	<b><u>FA</u></b>
			TB:3.3.21	
41-42	366-374	16	Aberdeen Angus x Steers & Heifers	16-19 months
			<i>Homebred, Single Suckled, Out Wintered &amp; Registered Sires</i>	
			<b><u>J S &amp; N MORLEY, BASCOTE</u></b>	
			TB:TBC	
43-44	375-381	1	Aberdeen Angus Heifer	16 months
		11	Aberdeen Angus Steers & Heifers	12 months
			<i>Homebred, Single Suckled &amp; Registered Sire Glympton Eldamar 3rd</i>	
			<b><u>JB HM &amp; J GILBERT, ARLEY</u></b>	<b><u>FA</u></b>
			TB:TBC	
45	382	1	Limousin x Steer	17 months
			<b><u>OJ &amp; MJ GUEST, ORTON ON THE HILL</u></b>	<b><u>FA</u></b>
			TB:TBC	
45A	383-385	3	Aberdeen Angus x Heifers	15-19 months
		1	Charolais x Heifers	19 months
			<i>Homebred &amp; Single Suckled</i>	

<u>PEN</u>	<u>LOT</u>	<u><b>J O SMITH LTD, LAPWORTH</b></u>		<u><b>FA</b></u>
			TB:29.3.21	
46-48	386-399	22	Limousin x Steers & Heifers <i>Homebred (one not) &amp; Single Suckled</i>	16-26 months
			<u><b>F BADGER, HASELEY</b></u>	<u><b>FA</b></u>
			TB:TBC	
49	400-405	10	Aberdeen Angus x & Lincoln Reds	15-20 months
			<u><b>FE &amp; CJ BARNETT, FILLONGLEY</b></u>	<u><b>FA</b></u>
			TB:29.3.20	
50-54	406-431	5	British Blue Steers & Heifers	21 months
		3	Hereford Steers	26 months
		2	Hereford Steers	14-15 months
		8	Hereford Heifers	16-21 months
		28	Aberdeen Angus Steers & Heifers <i>Homebred &amp; Registered Sires</i>	14-21 months
			<u><b>DETAILS AT TIME OF SALE</b></u>	
			TB:TBC	
55-56	432-444	15	Aberdeen Angus Steers & Heifers <i>Registered Sires</i>	16-18 months
			<u><b>HN &amp; SE STAINES, COUNTSTHORPE</b></u>	
			TB:29.3.21	
57	445	1	Simmental x Steer	18 months
	446	1	Aberdeen Angus Heifer <i>Homebred &amp; Single Suckled</i>	18 months
			<u><b>R J &amp; P MILNER, COVENTRY</b></u>	<u><b>FA</b></u>
			TB:30.3.32	
58	447-453	10	Simmental x Steers & Heifers <i>Homebred &amp; Single Suckled</i>	18 months
			<u><b>A J FORRESTER, BIDFORD ON AVON</b></u>	
			TB:TBC	
59-60	454-463	15	British Blue & Limousin Steers	20-21 months



<u>PEN</u>	<u>LOT</u>	<u><b>P J BETTERIDGE, FILLONGLEY</b></u>		
		TB:29.3.21		
61-62	464-472	2	Aberdeen Angus x Steers	12-19 months
		1	Aberdeen Angus x Heifer	21 months
			<i>Homebred, Registered Sire Easton Grey Rustic</i>	
		4	Aberdeen Angus x Steers & Heifers	19 months
			<i>Registered Sire Titus</i>	
		4	Aberdeen Angus x Steers & Heifers	20 months
		1	Friesian Heifer (Freemartin)	27 months

**S POWELL, RADFORD SEMELE**

TB:TBC

63	473-474	2	Red Poll Heifers	18 months
----	---------	---	------------------	-----------

**J S ARTHERS, BEDWORTH**

**FA**

TB:16.3.21

64	475	1	Limousin x Heifer	24 months
			<i>Homebred &amp; Single Suckled</i>	

**— I EWES WITH LAMBS AT FOOT  
TO BE PENNED ON ARRIVAL IN THE  
FAT CATTLE SHED**

**G SCRIVENS, MITCHELDEAN**

- 8 Cheviot Mule Ewe Lambs  
*With Single Charollais x Lambs at foot*
- 8 Welsh Mule Ewe Lambs  
*With Single Charollais x Lambs at foot*  
*Ewes on Heptavac P System, Cydectin 2%  
Injection & Footvax*

**WARNER BROS, WATERGALL**

- 5 Beltex x Ewe Lambs  
*With Single Lambs at foot*

**G K DOYLE, BARCHESTON**

- 10 Blue Texel 4Tooth to 6Tooth Ewes  
*With Blue Texel Lambs at foot*

**P EYKYN, HENLEY IN ARDEN**

- 10 Lleyrn x Blue Faced Leicester Ewes 4yr  
*With Twin Beltex x Lambs at foot*
- 5 Lleyrn x Continental Full Mouth Ewes  
*With Twin Beltex x Lambs at foot*  
*March Born, Heptavac P, Enzootic, Vitamin*  
*Bolus, Cydectin on turn out and Ewes &*  
*Lambs have been Scabivaxed*

**COOK FARM PARTNERSHIP,**  
**BRICKLEHAMPTON**

**FA**

- 30 Texel x Ewe Lambs  
*With 30 Texel x Beltex Lambs at foot*  
*On Heptavac P System*

**P MARDELL, FILLONGLEY**

**FA**

- 30 Texel x Ewes  
*With 3/4 Texel Mainly Double Lambs at foot*  
*Ewes on Heptavac P System, Wormed &*  
*Fluked*

**A BENTON, TANWORTH IN ARDEN**

- 6 Texel x Full Mouth & Lost Corner  
*With 9 Texel Lambs at foot*

**JJ LIVESTOCK SOLUTIONS LTD,**  
**BASINGSTOKE**

- 40 Suftex Ewes  
*With Meatlink Lambs at foot*

**R J WRIGHT, HUNNINGHAM**

**FA**

- 15 Texel x 6Tooth to Full Mouth Ewes  
*With Beltex x mainly Double Lambs at foot*  
*Heptavac P*

**HS & DR WEAVER, LADBROKE**

- 15 Cheviot x Mule Double Theaves  
*With Twin Texel x Lambs at foot*

**100 extra couples expected on the day**

**\*\*ALL NEW CUSTOMERS must provide an auctioneer's reference.**

<p><b>TIME OF ARRIVAL</b> Vendors are encouraged to book in their cattle at least 2 hours prior to being sold to ensure that purchasers are able to read all the information regarding vendors' stock on the overhead screen in the sale ring. Market gates open at 6.00am.</p>
<p><b>DELIVERY OF PASSPORT</b> Could vendors and/or hauliers please deliver cattle passports and accompanying documents to the BLUE BOOKING IN OFFICE at the bottom of the cattle race.</p>
<p><b>EAR TAGGING</b> All cattle – Born: after 1st April 1998 – must be tagged with two approved ministry ear tags before entering the market. Unfortunately we do not have the facilities to tag cattle in the market on the day of sale.</p>
<p><b>IN-CALF HEIFERS</b> All heifers are sold on the basis that they are not in-calf unless otherwise stated. If any animals have to be returned to the vendor after being 'PDD' in-calf, the purchaser will be reimbursed the material costs displayed in the 'LAA Conditions of Sale'. Keep is charged at £9 per week from 1st November to 31st April, and £5 per week at grass.</p>
<p><b>CONDITIONS OF SALE</b> All stock will be sold in accordance with the 'Livestock Auctioneers Association Conditions of Sale 1998' as varied. A copy of which is on display in the market office.</p>

1	Mortality Warranty
	Subject to the conditions set out below RFM agrees to repay the hammer price of any animal sold at its auctions which dies within seven days of the date of the fall of the hammer as a direct result of a condition which existed at the time of the fall of the hammer ("the mortality warranty"). RFM will not make any payment over and above the hammer price nor reimburse any consequential losses or incidental expenses incurred.
2	Conditions
	The conditions which must be satisfied before payment by RFM pursuant to the Mortality Warranty set out in sub condition 1 above are as follows:
2.1	The Buyer must notify RFM in writing of the death of an animal which may give rise to a claim pursuant to the Mortality Warranty ("a Claim Notice") so that such Claim Notice is received in the office of RFM within 24 hours of such death and then at the Buyer's own cost produce a certificate from a qualified veterinary surgeon:
A)	Confirming the cause of death, and
b)	Confirming the veterinary surgeon's opinion that such cause existed at the time of the fall of the hammer, and
c)	Confirming whether, in the veterinary surgeon's opinion, there is anything which might give rise to the belief that at the time of the sale the vendor of such animal knew or ought to have known of, or had good reason to suspect the existence of the condition which caused the death, or of any symptoms connected with such condition. Such certificate to be produced to RFM within 48 hours of death.
2.2	If RFM so wishes, it may at its own cost obtain a certificate from the veterinary surgeon of its own choice within three days of notification of death by a Buyer.
2.3	The Buyer shall not dispose of any animal in respect of which they intend to claim pursuant to the Mortality Warranty until three days have expired since the Buyer has given a Claim Notice and given the opportunity for RFM or its nominated veterinary surgeon to inspect such animal as soon as it wishes during that time.
2.4	No payment will be made pursuant to the Mortality Warranty where RFM's veterinary surgeon certifies that the Buyer or the employee's agents, subcontractors or independent contractors engaged by the Buyer or their agents have caused or contributed to the death of the animal by the Buyer's own actions or omissions or those of the Buyer's employees agents subcontractors or independent contractors and the certificate of such veterinary surgeon shall be final and binding upon the Buyer and RFM.
3	Vendor's Responsibility

## COVID 19

**PLEASE REGISTER YOUR ATTENDANCE AT THE MARKET OFFICE, WEAR A FACE COVERING AND SOCIAL DISTANCE AT ALL TIMES THANK YOU**



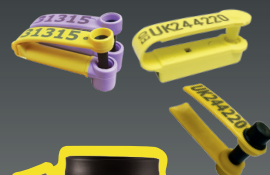
## SWITCH & UPGRADE

No compromise on quality, choice, service or support when you Switch & Upgrade to any product lines from ROXAN and KiwiKit.

Whether for tagging, EID reading, feeding or fencing, our products offer complete solutions for farmers to minimise cost and maximise output while ethically rearing productive and healthy livestock.



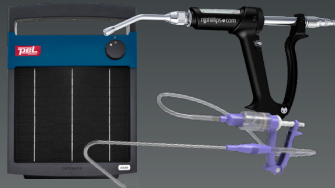
### SHEEP TAGS



### CATTLE TAGS



### & MORE!



TO CLAIM A FREE MUG FILL OUT THE FORM AT:  
[offers.roxan.co.uk/auction-markets](http://offers.roxan.co.uk/auction-markets)



**LAURA SMITH**

BUSINESS DEVELOPMENT MANAGER  
MIDLANDS / NORTH ENGLAND

MOBILE: 07951 969 087  
EMAIL: [laura.smith@roxan.co.uk](mailto:laura.smith@roxan.co.uk)

**KiwiKit ROXAN**

[www.kiwikit.co.uk](http://www.kiwikit.co.uk)  
[www.roxan.co.uk](http://www.roxan.co.uk)

FOLLOW US:    